

-Programme-

Post Tour: Thailand Travel Mart Plus (TTM+) 2025

PT-02 "The Northern Journey: Culture, Cuisine, and Craft"

7-10 June 2025 [4 Days 3 Nights]

"Embark on an unforgettable 4-day journey through Northern Thailand and immerse yourself in the rich culture and stunning landscapes of Lampang, Phrae, and Nan. Get the chance to indulge in authentic northern Thai cuisine, and marvel at the awe-inspiring ancient temples and the local charms. This "MUST GO" journey offers a perfect blend of cultural immersion, culinary delights, and natural beauty, promising a truly memorable Northern Thai experience."



Trip Highlight:

Lampang:

- **Dhanabadee Ceramic Museum:** Learn the history of the "rooster bowl," witness the oldest dragon kiln, and decorate your own ceramic art.
- **Wat Phra That Doi Phra Chan:** Visit this temple situated on a hilltop and see the replica statue of the Great Buddha of Kamakura.
- **Lampang city tour by horse carriage:** See the significant spots in Lampang.

Phrae:

- **Phrae city tour by tram:** Visit the city's iconic and historic buildings and temples.

Nan:

- **Wat Phumin:** A temple located at the heart of the city famous for its beautiful wall murals.
- **Cocoa Valley:** Try bakeries and beverages made from Nan-grown cocoa, take a garden tour, and participate in the chocolate bar making workshop.
- **Bo Suak Community:** Discover the benefits of Thai herbs, explore the demonstration plot for growing herbal plants, and relax in herbal steam.

Day 1 Saturday 7th June 2025 [Chiang Mai – Lampang]

08.15 hrs. Arrive at **Chiang Mai Railway Station**

08.50 hrs. Depart for Nakhon Lampang Railway Station by **Special Express No. 8** (08.50 - 10.45 hrs. /approx. 2 hrs.)

10.45 hrs. Arrive at Nakhon Lampang Railway Station

11.30 hrs. **Dhanabadee Ceramic Museum:** Learn the history of "rooster bowl", a symbol of Lampang province, witness the oldest dragon kiln in Lampang and get the chance to decorate your very own ceramic art! (approx. 1 hr.)



12.30 hrs. **Lunch at Baan Phraya Suren by Madame Musur** (*STG Star, 5 STARs rating*): Savor your taste buds with authentic Thai food and royal Thai cuisine in a historic mansion with contemporary and Lanna architectural designs, originally the home of Phraya Surenthon Ratchasena, first governor of Lampang.



14.00 hrs. Visit **Wat Phra That Doi Phra Chan**, situated at the serene top hill "Doi Phra Chan". Be prepared to be in awe of the replica statue of the Great Buddha of Kamakura, Naga stairs and the arch doorway leading to the panorama scenery, making this the perfect spot for photography enthusiasts.



16.00 hrs. Check in at **Tree Tara Hotel, Lampang**

(*CF hotel, 8.56 kgCO₂e/guest night*)

A complete relaxation with Full Facilities in a sustainable and local-friendly environment.

<https://www.treetarahotel.com/en/>



17.30 hrs. **Lampang city tour by horse carriage:** Lampang horses will take you to see the significant “*must see*” spots in Lampang such as the city hall, clock tower, Lampang governor’s residence, Ratsadaphisek bridge, community area, and the busy market.



18.30 hrs. **Dinner at Riverside Restaurant** to enjoy divine local Thai food and cozy atmosphere by Wang river.



19.30 hrs. Stop by **Kad Kong Ta Walking Street**, an extremely popular street among locals and tourists. The lane opens only on weekends and is packed with tasty local street food, handicrafts and unique souvenirs.



20.30 hrs. Overnight stay at **Tree Tara Hotel, Lampang**

Day 2 Sunday 8th June 2025 [Phrae - Nan]

08.30 hrs. Check out and depart to **Phrae province** by van (approx. 1.45 hrs.)

10.15 hrs. Pop in at **Charlotte Hut Coffee & Tea Bar** to enjoy nice coffee and delicious bakery. The café consists of many photogenic spots as well.



11.00 hrs. **Phrae city tour by tram:** The tour starts at Khum Chao Luang Mueang Phrae and the tram takes you to visit the city's iconic and historic buildings and temples of Lanna, Siam, Burmese and Colonial influence. (approx. 1 hr.)



12.00 hrs. **Lunch at Na Buree Restaurant**, this place received "*Thai Select Classic Award*" by Ministry of Commerce in 2024, guaranteeing the authentic Thai taste, great quality, and ambiance that reflects the essence of Thai dining experience.



13.30 hrs. A brief stop at **Phae Mueang Phi Forest Park:** Wander around the mysterious looking city made of strange looking rock formations made from erosion of soil and sandstones 2 million years ago.



- 14.00 hrs. Depart to **Nan province** (approx. 1.45 hrs.)
- 16.00 hrs. **Ban Khom Kham:** Making "Ma Tao Lantern," a hanging lantern with distinctive design, traditionally used by the nobility to decorate during significant cultural ceremonies and then make merit by offering the lantern to nearby temple.



- 17.45 hrs. Check in at **Emmaline Hotel Nan** (STG Star, 5 STARS rating)
<https://www.ozohotels.com/emmaline-hotel-nan>



- 18.30 hrs. Dinner at **Voila Nirvanan**, a Thai-European style restaurant owned by the chef with 20 years of experience that will guarantee to serve you high quality ingredients and the exclusive flavors of his cooking.



- 19.00 hrs. Local Street Food Experience at **Kuang Mueang Nan Walking Street**. A night market with Wat Phumin as the background. You also can visit **Wat Phumin** at night, the temple that famous for its beautiful wall murals with artistic visuals and historical value.



20.30 hrs. Overnight stay at **Emmaline Hotel Nan**

Day 3 Monday 9th June 2025 [Nan]

08.30 hrs. Depart from hotel to Wat Sri Mongkol (approx. 1 hr.)

09.30 hrs. Pay a visit at **Wat Sri Mongkol**, an ancient temple brimming with Lanna art and culture. On top of that, this temple comes with a stunning view of the green rice paddy field from the temple's terrace.



10.30 hrs. Visit **Cocoa Valley** and try their bakeries and beverages made from Nan grown cocoa, then take a garden tour to see the beginning of cocoa and participate in the chocolate bar making workshop, while learning about their best practices towards sustainability.



12:00 hrs. **Lunch at Pupah Kanna Pua**, a restaurant inside a resort that offers Northern Thai cooking with where you can enjoy the beauty of nature and peaceful atmosphere.



13.30 hrs. Depart to Bo Suak Community (approx. 1.15 hrs. drive)

14:45 hrs. Discover the benefits of Thai herbs at **Bo Suak Community** (*Best Tourism Village 2024 by UNWTO*) by exploring the demonstration plot for growing herbal plants such as lemongrass, turmeric, kaffir lime etc. Later have a relax time in herbal steam therapy and soak your feet in herbal salt.



16.00 hrs. Depart to Nan city

16.30 hrs. Relax at the hotel

18.00 hrs. Dinner at **Huan Phuka**, a real authentic Nan restaurant, decorated with old wooden tools, hanging spices, and other icons of Nan. The dining area is open-air and offers a variety of local dishes with reasonable price.



20.00 hrs. Overnight stay at **Emmaline Hotel Nan**

Day 4 Tuesday 10th June 2025 [Nan – Bangkok]

09.00 hrs. Check out from hotel

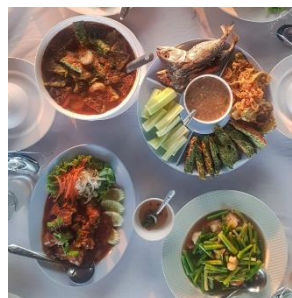
09.15 hrs. Embrace the surrounding panorama of Nan city from the viewpoint area of **Wat Phrathat Khao Noi**, the interior decoration is a mixture of Burmese and Lanna art and also contains the hair relics of the Lord Buddha that many Buddhists come to pay respect.



10.00 hrs. After that, drop by at **Hani Creative Space**, the café is perfect for people who are looking for a cool and peaceful place to enjoy their morning coffee with tranquility.



11.00 hrs. **Lunch at Suriya Garden Restaurant**, the restaurant serves a variety of Thai food, especially fresh fish from the Nan river that will certainly be an ideal last lunch at Nan.



12.00 hrs. Check in at **Nan Nakhon Airport**
(Air Asia, FD 3553, NNT-DMK 13.20-14.30 hrs.)

13.25 hrs. Depart to **Don Mueang International Airport**

14.30 hrs. Arrive at Don Mueang International Airport
End of programme

Remarks: The programme may be subject to change without prior notice.

As of 17 March 2025