

**-PROGRAMME-**

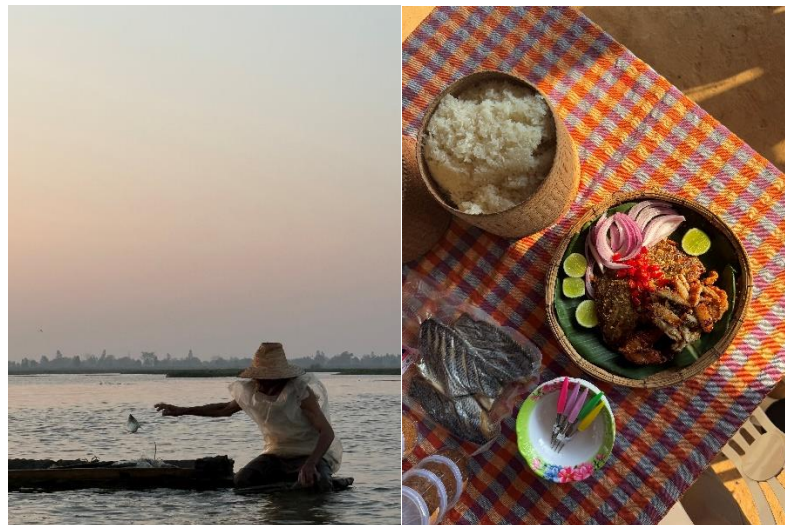
**Post Tour: Thailand Travel Mart Plus (TTM+) 2025**

**PT-03 "Khon Kaen: The Soul of Isaan, the Land of Exotic Exploration"**

**7-10 June 2025 [4 Days 3 Nights]**

\*\*\*\*\*

*"Embark on an extraordinary adventure into the heart of Isaan, Thailand's captivating and little-explored northeastern region. This journey offers a rare glimpse into an authentic and culturally rich world, promising unforgettable and unique moments. As a highlight, we will explore the renowned Dinosaur Valley, the very spot where a World's new species of dinosaur was unearthed"*



**Trip Highlights**

- **Phu Wiang National Park:** Explore the birthplace of Thailand's dinosaur fossil discoveries, and try unearth the fossil by your own hand.
- **Kaeng Lawa Wetland:** Discover a rich ecosystem and observe the traditional way of life.
- **Isan Cuisine:** Embark on a culinary adventure, savoring the unique flavors of Northeastern Thailand.
- **Local Culture:** Immerse yourself in the traditions and artistic expressions of the Isaan people.

**Day 1****Saturday 7<sup>th</sup> June 2025 [Chiang Mai-Khon Kaen]**

11.00-11.30 hrs.

Depart from official hotel for Chiang Mai International Airport

12.55 hrs.

Depart to Khon Kaen province (Thai Air Asia, FD 5502)

14.00 hrs.

Arrive at Khon Kaen International Airport

15.00 hrs.

**Columbo Craft Village**

- Explore this vibrant community of artists, where a former wasteland has been transformed into a hub of artistic expression. There are now as many as 15 artist studios such as wood, embroidery, ceramic, cartoon, bag and cafe'.
- Participate in a [hands-on ceramics workshop](#) at Chu.pot studio.



16.30 hrs.

Check in at [Ad Lib Hotel Khon Kaen](#) (Recognized as a Runner-Up at the Responsible Thailand Awards 2024).
<https://www.adlibhotels.co/khon-kaen/>


20.00 hrs.

Dinner at [See Na Nuan Cafe](#) (MICHELIN Bib Gourmand). Indulge in the flavors of central Thai fare and Isan dishes in an industrial-style house with a huge outdoor dining area.

21.30 hrs.

Visit **Phra Mahathat Kaen Nakhon Temple**, an awe-inspiring temple, an 80-meter-high architectural marvel adorned with a 7-headed Naga serpent, blending Dvaravati and Indochina artistic styles.



22.00 hrs.

Overnight stay at **Ad Lib Hotel Khon Kaen**

## Day 2

**Sunday 8<sup>th</sup> June 2025**

08.00 hrs.

Journey to Wiang Kao District.

09.00 hrs.

**"Delve into the Prehistoric" one-day trip** in Geopark area, accompany by the local expert, uncovering the fascinating story of the region's first dinosaur fossil discovery 30 years ago.

- **Tan-Khun Farmstay:** Savor a refreshing herbal welcome drink and discover the unique charm of their "clayhouse," an eco-friendly dwelling crafted from natural materials.
- **Explore the area on** a three-wheeled motorcycle.



- **Forest Temple's Hidden Gems:** Wander through a vast stone field nestled behind a serene forest temple.





- **Baan Hin Rong Village:**

- Receive a warm welcome and blessings from the villager.
- Participate in this traditional Isaan merit-making ritual, creating intricate "wax castles" for Buddhist temples.
- Sticky Rice with **Wild Yam Workshop**.
- Learn the art of preparing this local delicacy and savor a **homemade lunch with the villagers.**



13.00 hrs.

Craft your own vetiver grass bracelet at a local farm.



14.00 hrs.

### **Phu Wiang Dinosaur Museum**

Step into the world of dinosaurs at this renowned museum (*Thailand Tourism Silver Award-Low Carbon & Sustainability*).



16.00 hrs.

**Phu Wiang National Park: A Fossil Wonderland**

Explore the birthplace of Thailand's dinosaur fossil discoveries and visit an active excavation site and try your hand at cracking.



18.00 hrs.

Dinner at **Tan-Khun Farmstay** accompanied by a captivating mini cultural performance by local artists.



20.30 hrs.

Return to **Ad Lib Hotel Khon Kaen** for an overnight stay.

**Day 3****Monday 9<sup>th</sup> June 2024**

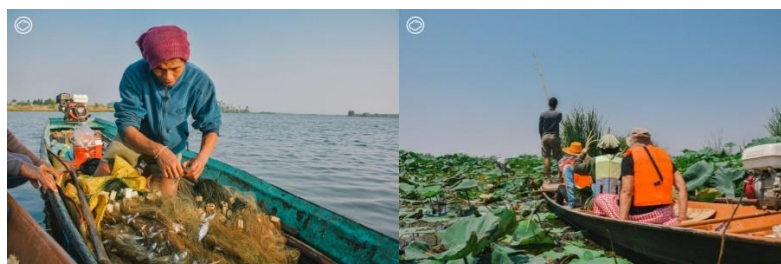
05.00 hrs.

Depart from the hotel.

06.00 hrs.

**Kaeng Lawa Wetland: A Symphony of Nature**

- Embark on a boat journey through this vast wetland, one of the Northeast's 12 most important ecological sites covering over 6,000 acres.
- Observe the traditional way of life of the local community, deeply intertwined with the wetland's resources.



08.30 hrs. **Fermented Fish (Isan Pla-ra) Workshop**  
Learn the secrets of this Isaan culinary staple from a renowned Pla-ra producer from Kaeng Lawa.

11.00 hrs. **Baan Lang Wat (house behinds the temple) Cafe'**  
Take a break at this charming café, nestled behind a temple.

12.30 hrs. Lunch at **Tumkratoei Sagate**  (MICHELIN Bib Gourmand).  

- Indulge in flavorful dishes, warm hospitality, and affordable prices at this relaxed eatery.
- Sample the signature spicy seafood salad with fermented fish sauce and other culinary delights.

14.00 hrs. Refreshing at the hotel.

17.00 hrs. Visit **MAIELIE Khonkean**, a contemporary art gallery.

<https://www.instagram.com/maielie.khonkaen/>



18.00 hrs. Dinner at **KAEN Fine Dining**  (MICHELIN Bib Gourmand), a Culinary  
Homage to Kaeng Lawa

Savor exquisite dishes crafted from local ingredients, showcasing the abundance of the Kaeng Lawa region.





20.00 hrs.

**Ton Tann Green Market**, a night shopping space.

Explore this expansive market, brimming with fashion, handicrafts, food, and drinks. The market is also a hub of local hobbies and interests, from storytelling to classic cars.



21.00 hrs.

Overnight stay at **Ad Lib Hotel Khon Kaen**.

## Day 4

**Tuesday 10<sup>th</sup> June 2024**

10.00 hrs.

**Jutatip:** The Art of Hand-woven Cotton

Learn about the craft of hand-woven cotton fabric of the Northeast, especially the technique of arranging each strand of

fiber into patterns. You can also learn about natural color dye techniques and weaving cotton fabric. <https://jutatip.com/>



12.30 hrs.

Lunch at **Mee Kin Farm** (MICHELIN Guide, 5 STARS in Sustainable Tourism Acceleration Rating).

Farm-to-table is the philosophy here. The owner grows fruits and vegetables and raises poultry on the farm. They use simple cooking techniques and focus on the ingredients' natural flavours. Although short, the menu perfectly embodies the Isan spirit.



16.10 hrs.

Depart to Don Mueang International Airport, Bangkok (Thai Air Asia, FD 3261).

17.15 hrs.

Arrive at Don Mueang International Airport, Bangkok.  
End of the program.

\*\*\*\*\*

**Remarks:** The programme may be subject to change without prior notice.

As of 11 March 2025